

1. Adele Polo

Female fit Polo with side splits.

Size: Adult and Children

Fabrication: Kea Cooledri
Cottonbacked Cooledri

N.B. Collar can be either knitted or self fabric



2. Amanda Polo

Female fit sleeveless Polo with contrasting side panels and side splits.

Size: Adult and Children

Fabrication: Kea Cooledri
Cottonbacked Cooledri

N.B. Collar can be either knitted or self fabric



3. Audrey Polo

Female fit Polo with contrasting side panels, piping and side splits.

Size: Adult and Children

Fabrication: Kea Cooledri
Cottonbacked Cooledri

N.B. Collar can be either knitted or self fabric



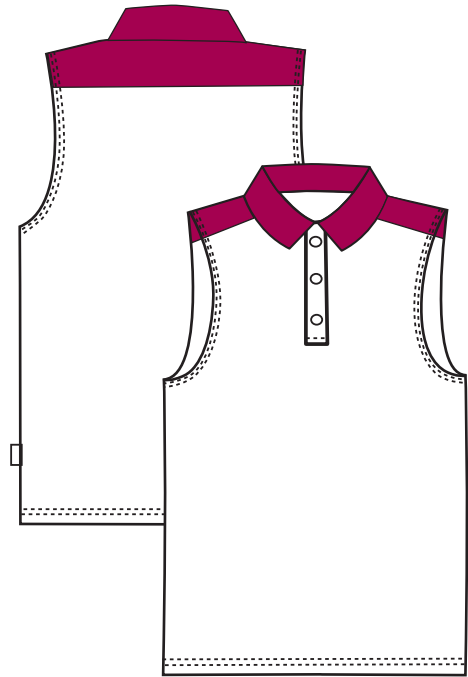
4. Avenue Polo

Female fit Polo with contrasting yoke pipe and side splits.

Size: Adult and Children

Fabrication: Kea Cooledri
Cottonbacked Cooledri

N.B. Collar can be either knitted or self fabric



5. Cassie Polo

Female fit Sleeveless Polo with contrasting yoke.

Size: Adult and Children

Fabrication: Kea Cooledri
Cottonbacked Cooledri

N.B. Collar can be either knitted or self fabric



6. Charlotte Polo

Female fit Polo with contrasting panels, pipe and side splits.

Size: Adult and Children

Fabrication: Kea Cooledri
Cottonbacked Cooledri

N.B. Collar can be either knitted or self fabric



7. Claudia Polo

Female fit sleeveless Polo with contrasting side panels, pipe and side splits.

Size: Adult and Children

Fabrication: Kea Cooledri
Cottonbacked Cooledri

N.B. Collar can be either knitted or self fabric



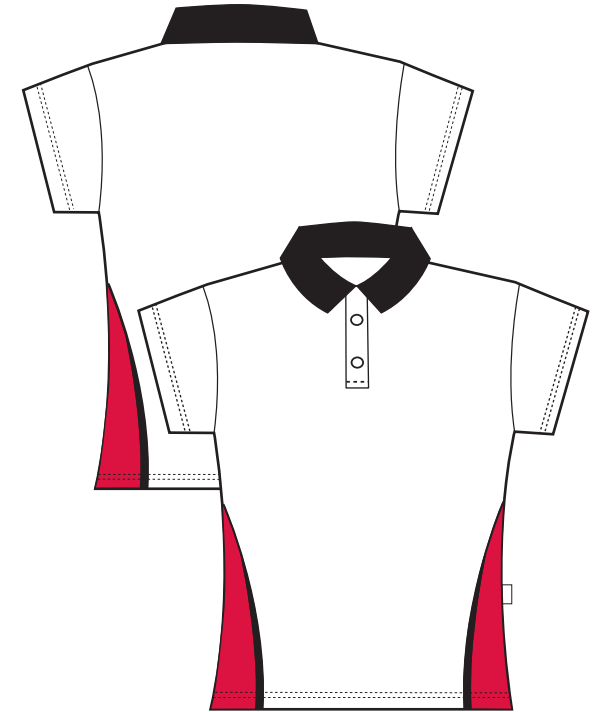
8. Gemma Polo

Female fit Polo with V-neck binding feature and side splits.

Size: Adult and Children

Fabrication: Kea Cooledri
Cottonbacked Cooledri

N.B. Collar must be self fabric



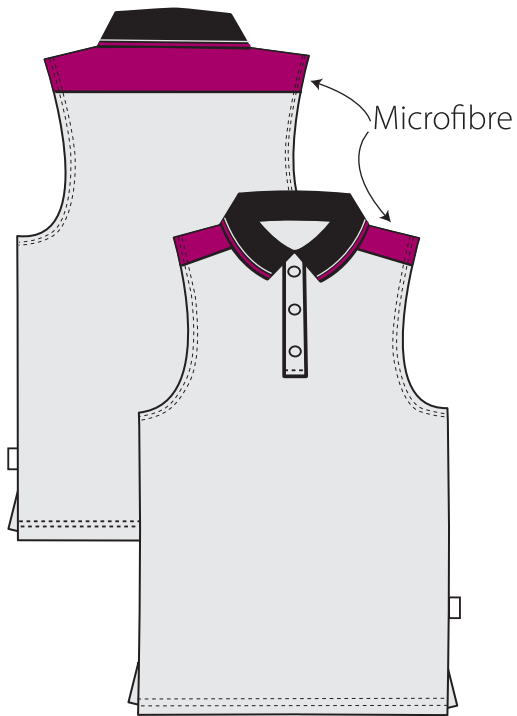
9. Josie Polo

Female fit Polo with cap sleeves and contrasting panels.

Size: Adult and Children

Fabrication: Kea Cooledri
Cottonbacked Cooledri

N.B. Collar can be either knitted or self fabric



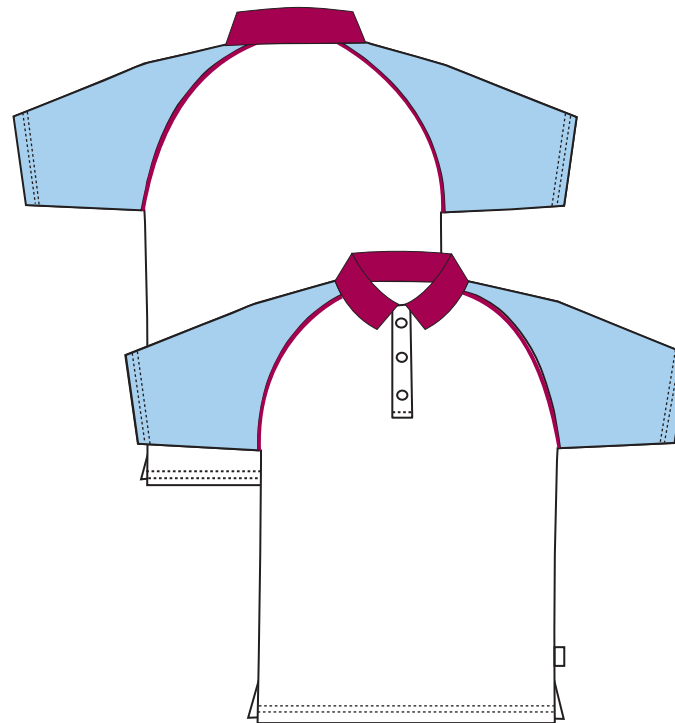
10. Julie Polo

Female fit Sleeveless Polo with contrasting yoke in Microfibre and side splits.

Size: Adult and Children

Fabrication: Kea Cooledri
Cottonbacked Cooledri

N.B. Collar can be either knitted or self fabric



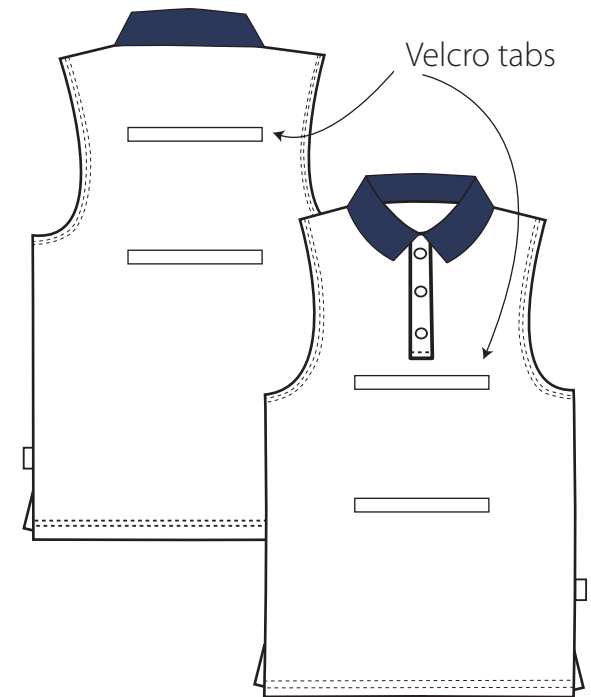
11. Karen Polo

Female fit Polo with pipe feature in sleeve seam and side splits.

Size: Adult and Children

Fabrication: Kea Cooledri
Cottonbacked Cooledri

N.B. Collar must be self fabric



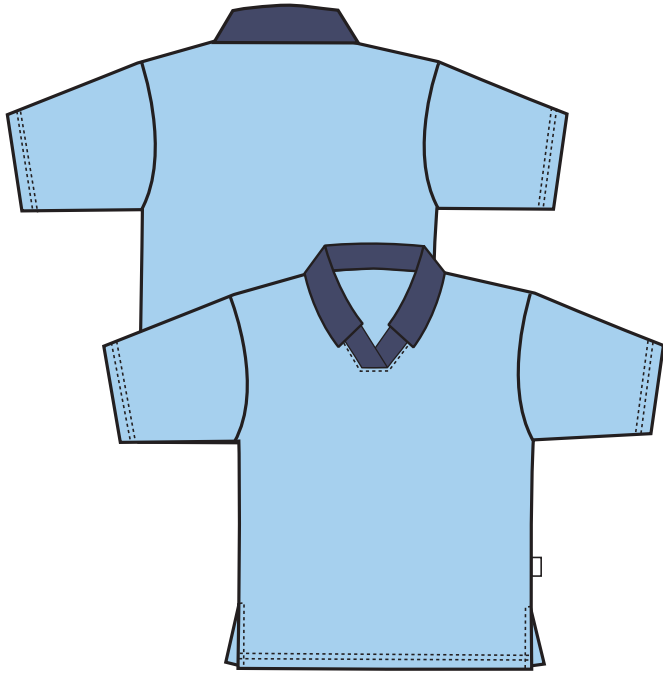
12. Lorraine Polo

Female fit Sleeveless Polo with with velcro tabs to attach netball patches.

Size: Adult and Children

Fabrication: Kea Cooledri
Cottonbacked Cooledri

N.B. Collar can be either knitted or self fabric



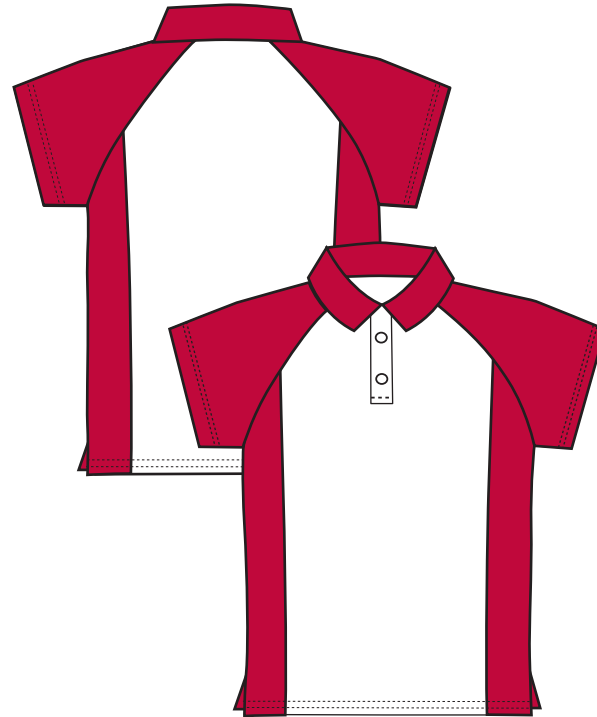
13. Lyndall Polo

Female fit Polo with cross over V-neck
Placket and side splits.

Size: Adult and Children

Fabrication: Kea Cooledri
Cottonbacked Cooledri

N.B. Collar can be either knitted or self fabric



14. Margaret Polo

Female fit Polo with contrast panels
and side splits.

Size: Adult and Children

Fabrication: Kea Cooledri
Cottonbacked Cooledri

N.B. Collar must be self fabric



15. Nicola Polo

Female fit Polo a knitted rib arm-band
and side splits.

Size: Adult and Children

Fabrication: Kea Cooledri
Cottonbacked Cooledri

N.B. Collar can be either knitted or self fabric



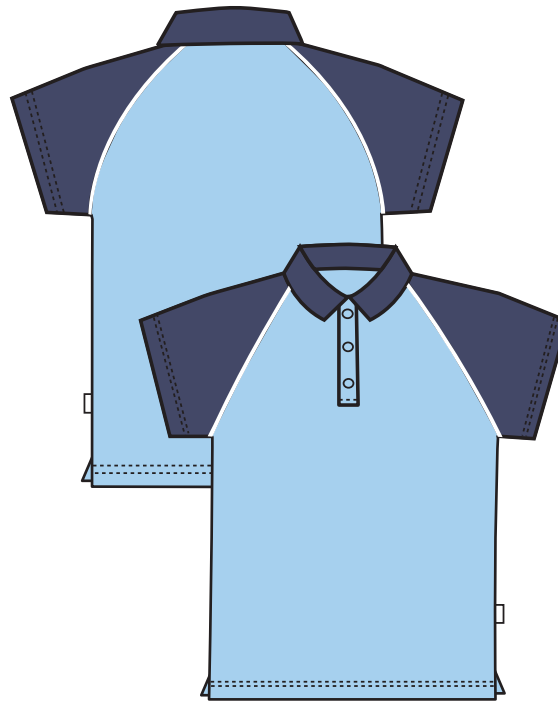
16. Orchid Polo

Female fit Polo with contrast panels and pipe feature with side splits.

Size: Adult and Children

Fabrication: Kea Cooledri
Cottonbacked Cooledri

N.B. Collar can be either knitted or self fabric



17. Peach Polo

Female fit Polo with contrast panels, pipe and side splits.

Size: Adult and Children

Fabrication: Kea Cooledri
Cottonbacked Cooledri

N.B. Collar must be self fabric



18. Pearl Polo

Female fit Polo with contrast panels, pipe and side splits.

Size: Adult and Children

Fabrication: Kea Cooledri
Cottonbacked Cooledri

N.B. Collar can be either knitted or self fabric



19. Rachel Polo

Female fit Short sleeve Polo with contrast yoke and pipe feature.

Size: Adult and Children

Fabrication: Kea Cooledri
Cottonbacked Cooledri

N.B. Collar can be either knitted or self fabric



20. Serena Polo

Female fit Sleeveless Polo with contrast cap sleeve, and pipe with contrast binding around sleeve and V-neck.

Size: Adult and Children

Fabrication: Kea Cooledri
Cottonbacked Cooledri

N.B. Collar must be self fabric



21. Tiffany Polo

Female fit Polo with contrast panels and and side splits.

Size: Adult and Children

Fabrication: Kea Cooledri
Cottonbacked Cooledri

N.B. Collar can be either knitted or self fabric



20. Yvette Polo

Female fit Short sleeve Polo with contrast panels, pipe and side splits.

Size: Adult and Children

Fabrication: Kea Cooldri
Cottonbacked Cooldri

N.B. Collar can be either knitted or self fabric